

# Electric submerged pumps

Shown: WEM-1401E



## WE-series

Enerpac two stage electric submerged pumps are a quiet, economical workholding power source. Submerged in oil the motor stays cooler when used on an intermittent basis.

## Best performance for mid-range cylinders

- Reduce cycle times for improved productivity
- Two-speed pump unit provides rapid cylinder advance
- Submerged dual voltage induction motor, runs cooler and quieter (60-70 dBA)
- Available with heat exchanger for higher duty cycle applications
- Externally adjustable relief valve – no need to open pump when reducing pressure
- Reservoir mounting holes for easy mounting to fixed surface
- Full length side tube for easy monitoring of oil level
- Auxiliary return port, eliminates the need for a separate adapter.

## Select your pump type

### WED-series with dump valve

- For use when load holding is not required
- Ideal for palletized workholding for single acting circuits
- Motor is on only during work cycle.



### WEJ-series with remote jog

- Manual valve control
- Motor can be turned on and off by remote pendant for jogging capability.



### WEM-series with manual valve

- Manual valve control
- Manual motor control
- Simple and economical solution to your workholding power source needs.



### WER-series with remote actuated solenoid

- Solenoid directional with shear seal design
- Remote valve operation.



### WES, WET-series with pressure switch \*

- Pressure switch turns motor on and off
- Used when pressure must be maintained over a period of time
- With pressure gauge.



\* Pressure switch specifications: Classification NEMA 1  
 Pressure range: IC-51: 207-517 bar  
 IC-31: 35-241 bar.

Flow: 0,65 l/min

Pressure: 350 bar max

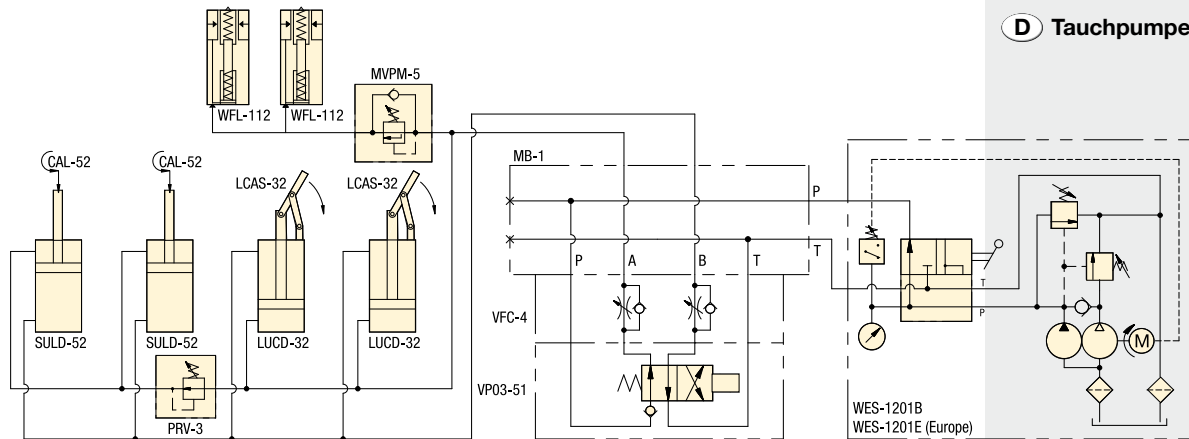
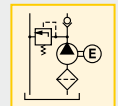
Motor: 0,37 kW

Reservoir: 5,7 litres

**E** Bombas eléctricas

**F** Centrale hydraulique

**D** Tauchpumpe



Used with cylinder	Valve function	Valve type	Model number	Motor voltage 50/60 Hz	Heat exchanger
Single-Acting	Advance / Retract	Dump	<b>WED-1101B</b>	115V	
Single-Acting	Advance / Retract	Dump	<b>WED-1101E</b>	230V	
Single-Acting	Advance / Retract	Jog	<b>WEJ-1201B</b>	115V	
Single-Acting	Adv. / Hold / Retr.	Jog	<b>WEJ-1301B</b>	115V	
Double-Acting	Adv. / Hold / Retr.	Jog	<b>WEJ-1401B</b>	115V	
Single-Acting	Advance / Retract	Manual 3/2	<b>WEM-1201B</b>	115V	
Single-Acting	Advance / Retract	Manual 3/2	<b>WEM-1201D</b>	115V	●
Single-Acting	Advance / Retract	Manual 3/2	<b>WEM-1201E</b>	230V	
Single-Acting	Advance / Retract	Manual 3/2	<b>WEM-1201F</b>	230V	●
Single-Acting	Adv. / Hold / Retr.	Manual 3/3	<b>WEM-1301B</b>	115V	
Single-Acting	Adv. / Hold / Retr.	Manual 3/3	<b>WEM-1301F</b>	230V	●
Double-Acting	Adv. / Hold / Retr.	Manual 4/3	<b>WEM-1401D</b>	115V	●
Double-Acting	Adv. / Hold / Retr.	Manual 4/3	<b>WEM-1401E</b>	230V	
Single-Acting	Adv. / Hold / Retr.	Solenoid	<b>WER-1301B</b>	115V	
Single-Acting	Adv. / Hold / Retr.	Solenoid	<b>WER-1301D</b>	115V	●
Single-Acting	Adv. / Hold / Retr.	Solenoid	<b>WER-1301E</b>	230V	
Double-Acting	Adv. / Hold / Retr.	Solenoid	<b>WER-1401B</b>	115V	
Double-Acting	Adv. / Hold / Retr.	Solenoid	<b>WER-1401D</b>	115V	●
Double-Acting	Adv. / Hold / Retr.	Solenoid	<b>WER-1401F</b>	230V	●
Single-Acting	Advance / Retract	Manual 3/2	<b>WES-1201B</b>	115V	
Single-Acting	Advance / Retract	Manual 3/2	<b>WET-1201B</b>	115V	
Single-Acting	Adv. / Hold / Retr.	Manual 3/3	<b>WES-1301B</b>	115V	
Single-Acting	Adv. / Hold / Retr.	Manual 3/3	<b>WES-1301E</b>	230V	
Double-Acting	Adv. / Hold / Retr.	Manual 4/3	<b>WES-1401B</b>	115V	
Double-Acting	Adv. / Hold / Retr.	Manual 4/3	<b>WES-1401E</b>	230V	

## Options

**G-series pressure gauges**

190 ▶



**FL-series high-pressure filters**

193 ▶



**FZ-series fittings**

194 ▶



**HF-series hydraulic oil**

193 ▶



## Important

**Oil should be replaced every 500 working hours to ensure long life. Change filters when changing oil or 4 times a year whichever comes first.**

**Heat exchanger cools oil in pumps used in higher duty cycle applications.**

**Output flow rate should be matched to hydraulic components used in the system.**

# WE-series, Submerged Electric Pumps

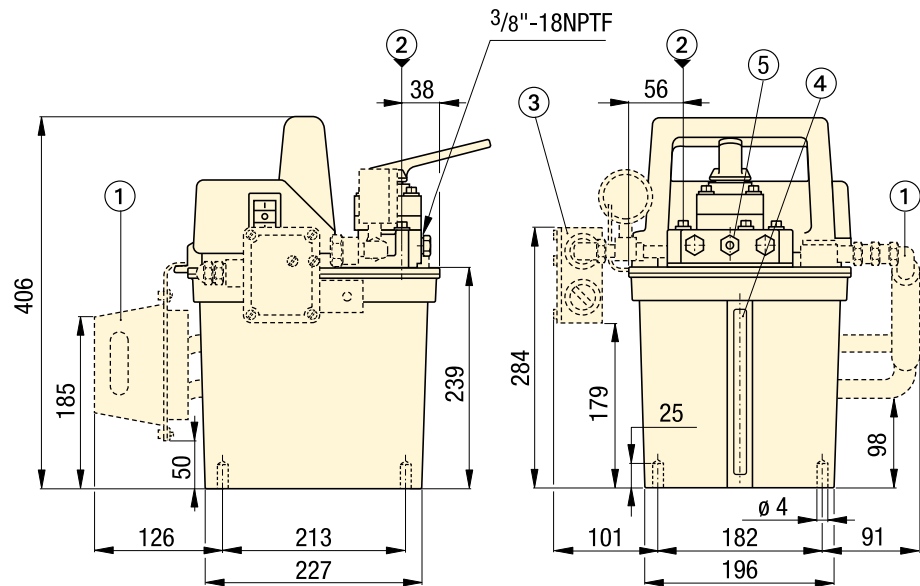
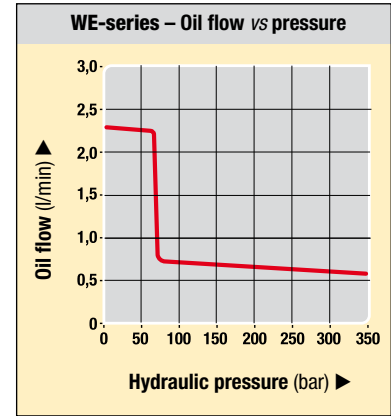
Shown: WEM-1401E



## WER series

Enerpac submersed motor pumps are available in a wide range of configurations to fit any requirement.

◀ For full features see page 110.



Dimensions shown in mm.

- ① Heat Exchanger (optional for all models)
- ② Fill Port
- ③ Pressure Switch (WES-Series, optional for other models)
- ④ Oil Level Indicator
- ⑤ Adjustable Relief Valve

## Product selection

Motor voltage	Motor capacity	Amperage draw	Maximum oil flow**		Pressure rating		Usable oil capacity	Adjustable relief valve	Weight
			1st stage	2nd stage	1st stage	2nd stage			
50/60 Hz	kW	Amps	1st stage	2nd stage	1st stage	2nd stage	litres	bar	kg
115V-1ph	0,37	13,5	2,45	0,65	70	350	5,5	70 - 350	29 <sup>1)</sup>
230V-1ph	0,37	6,75	2,45	0,65	70	350	5,5	70 - 350	29 <sup>1)</sup>

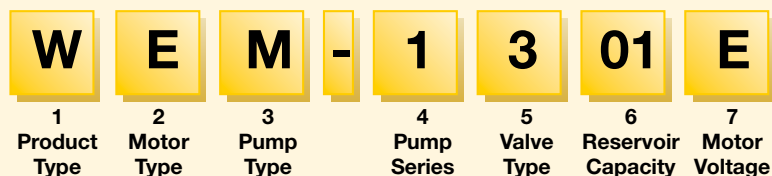
<sup>1)</sup> Weight for WES and WET models is 37 kg.

\*\* All flow data at 50 Hz.

## Custom build your submerged pump

### ▼ This is how a submerged pump model number is built up:

If the submerged pump that would best fit your application cannot be found in the chart on page 111, you can easily build your custom submerged pump here.



#### 1 Product Type

W = Workholding Pump

#### 2 Motor Type

E = Electric motor

#### 3 Pump Type

D = Dump

J = Jog

M = Manual

R = Remote (solenoid)

S = Pressure switch (IC-51)

T = Pressure switch (IC-31)

#### 4 Pump Series

1 = 0,37 kW, 350 bar

#### 5 Valve Type

0 = No valve (WER only)

1 = Dump

2 = 3-way, 2-position, normally open

3 = 3-way, 3-position, tandem center

4 = 4-way, 3-position, tandem center

5 = Custom VE-series valve (WER only)

See example 2 below.

#### 6 Reservoir Capacity

01 = 5,5 litres usable oil

#### 7 Motor Voltage and Heat Exchanger

B = 115 V, 1 Ph, 50/60 Hz

D = 115 V, 1 Ph, 50/60 Hz with heat exchanger

E = 230 V, 1 Ph, 50/60 Hz

F = 230 V, 1 Ph, 50/60 Hz with heat exchanger

I = 230 V, 1 Ph, 60 Hz\*

\* To order WER models, for 60 Hz applications, replace the "E" suffix for "I".

### Ordering example 1



### Examples

**Model number:**  
**WER-1301E**

The **WER-1301E** is a 0,37 kW, 350 bar, submerged electric pump, with 5,5 litres usable oil capacity, a 3-way, 3-position modular, remote solenoid valve (VEF-series) and a 230 V, 1 phase, 50/60 Hz motor.

**Model number:**  
**WER-1501E- VED11000D**

The **WER-1501E** is a 0,37 kW, 350 bar, submerged electric pump, with 5,5 litres usable oil capacity. The valve, model **VED11000D** is a 24 V, 50 Hz solenoid valve. (For details and options for all VE-series valves see pages 146-147).

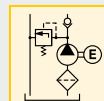
Flow: 0,65 l/min

Pressure: 350 bar max

Motor: 0,37 kW

Reservoir: 5,5 litres

- E** Bombas eléctricas
- F** Centrale hydraulique
- D** Tauchpumpe



### Important

**WER series pumps use the VE-series valves shown on page 146. WER-13 series uses VEF-series valve. WER-14 series uses VEC-series valve.**

**WES series pumps use IC-51 pressure switch, adjustable from 210-525 bar**

**WET series pumps use IC-31 pressure switch, adjustable from 35-245 bar.**