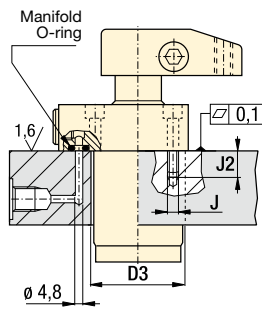


Installation dimensions in mm

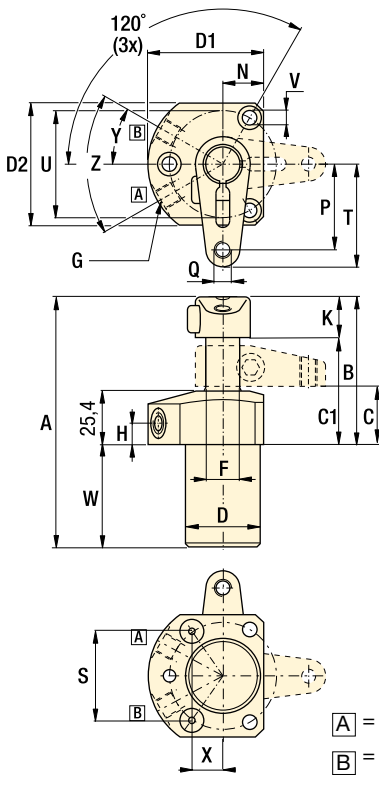
Clamping force ¹⁾ kN	Fixture hole Ø D3	Mounting thread J	Min. depth J2	Manifold O-ring ²⁾ ARP number or inside Ø x thickness
2,2	28,5	M5 x 0,8	16,5	568-010
5,6	35,5	M6 x 1,0	16,5	568-011
9,0	49,0	M6	15,0	4,32 x 3,53
11,6	49,0	.312-24 UNF	20,3	568-011
18,7	63,5	M8 x 1,0	17,0	4,32 x 3,53
33,8	78,0	M10 x 1,25	18,8	4,32 x 3,53

¹⁾ With standard clamp arm.
²⁾ Polyurethane, 92 Durometer

Note: Mounting bolts and O-rings included.

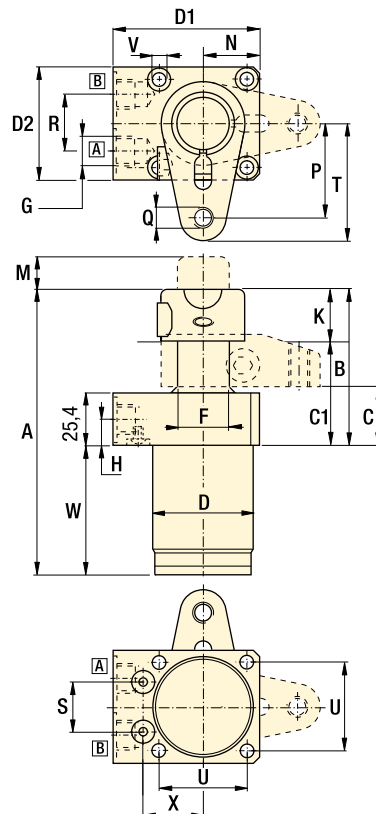


-92, 52, 121



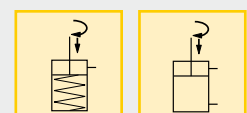
A = Clamping
B = Unclamping (venting)

-92, 202, 352



Force: 2,1 - 33,8 kN
Stroke: 16,4 - 48,4 mm
Pressure: 35 - 350 bar

- E** Cilindros giratorios
- F** Vérins de bridage pivotants
- D** Schwenkspannzylinder



Options

- Clamp arms** 32
- Work supports** 43
- Collet-Lok® swing cylinders** 12
- Accessories** 86

Important

30, 45, and 60 degree rotations are available upon request. Add -30, -45 or -60 to end of standard model number to order directly from Enerpac. To order rotation limiter separately, see page 58.

Custom cylinders including longer stroke lengths are available on request.

In case there is a risk of machining coolants and debris being inhaled via the breather vent, it is recommended to pipe this port to an area outside the fixture that is protected from machining coolants and debris.

Do not exceed maximum flow rates.

N	P	Q	R	S	T	U	V	W	X	Y	Z	kg	Right turning models
													Single acting ▼
15,5	24,6	M6 x 1	-	21,0	30,9	41,9	5,7	53,1	18,1	30°	60°	0,5	SURS-22
19,1	40,0	M8 x 1,25	-	41,0	47,9	50,0	6,8	66,0	14,4	30°	60°	1,1	SURS-52
26,4	45,9	M10 x 1,5	26,0	23,7	56,0	42,0	6,5	67,9	28,6	-	-	2,0	SURS-92
25,1	51,4	.375-16 UNC	-	52,0	61,8	63,5	8,8	85,9	18,2	30°	60°	1,6	SURS-121
34,4	55,2	M12 x 1,75	26,0	29,1	70,2	55,0	8,5	78,9	35,1	-	-	3,5	SURS-202
43,4	67,9	M16 x 2	26,0	34,4	82,9	70,0	10,8	88,6	41,6	-	-	5,5	SURS-352
													Double acting ▼
15,5	24,6	M6 x 1	-	21,0	30,9	41,9	5,7	53,1	18,1	30°	60°	0,5	SURD-22
19,1	40	M8 x 1,25	-	41,0	47,9	50,0	6,8	66,0	14,4	30°	60°	1,1	SURD-52
26,4	45,9	M10 x 1,5	26,0	23,7	56,0	42,0	6,5	67,9	28,6	-	-	2,0	SURD-92
26,4	45,9	M10 x 1,5	26,0	23,7	56,0	42,0	6,5	87,9	28,6	-	-	2,6	SURDL-92*
25,1	51,4	.375-16 UNC	-	52,0	61,8	63,5	8,8	85,9	18,2	30°	60°	1,6	SURD-121
25,1	51,4	.375-16 UNC	-	52,0	61,8	63,5	8,8	124,0	18,2	30°	60°	1,8	SURDL-121
34,4	55,2	M12 x 1,75	26,0	29,1	70,2	55,0	8,5	78,9	35,1	-	-	3,5	SURD-202
43,4	67,9	M16 x 2	26,0	34,4	82,9	70,0	10,8	88,6	41,6	-	-	5,5	SURD-352
43,4	67,9	M16 x 2	26,0	34,4	82,9	70,0	10,8	104,3	41,6	-	-	6,9	SURDL-352*